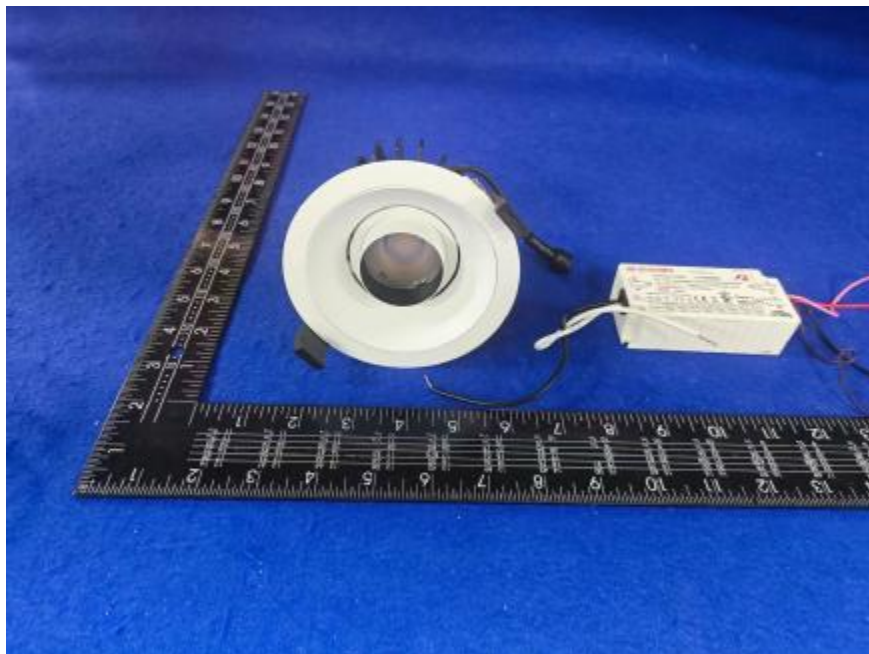


Luminaire Photograph



Light Output Ratio:	55.2%	
Luminaire Power:	17.31 W	
SHR Nominal:	0.75	Calculated using the TM5
SHR Maximum:	0.75	fine grid method.

C Range: 0 - 360DEG
C Interval: 30.0DEG
Test Speed: HIGH
Temperature: 25.3 °C
Operators: zoe
Test Date: 2023-7-13

γ Range: 0 - 180DEG
γ Interval: 1.0DEG
Test System: EVERFINE GO-SPEX500_V1 SYSTEM V2.00.461
Humidity: 65.0%
Test Distance: 3.160m [K=1.0000]
Remarks: LAMP: BXRV-DR-1830G-1000-K-23 Ra:90
LENS: PM-1096C 50R
DRIVER: PUP20A-1WMC 450mA
30minutes warm-up

LUMINOUS INTENSITY DISTRIBUTION DIAGRAM

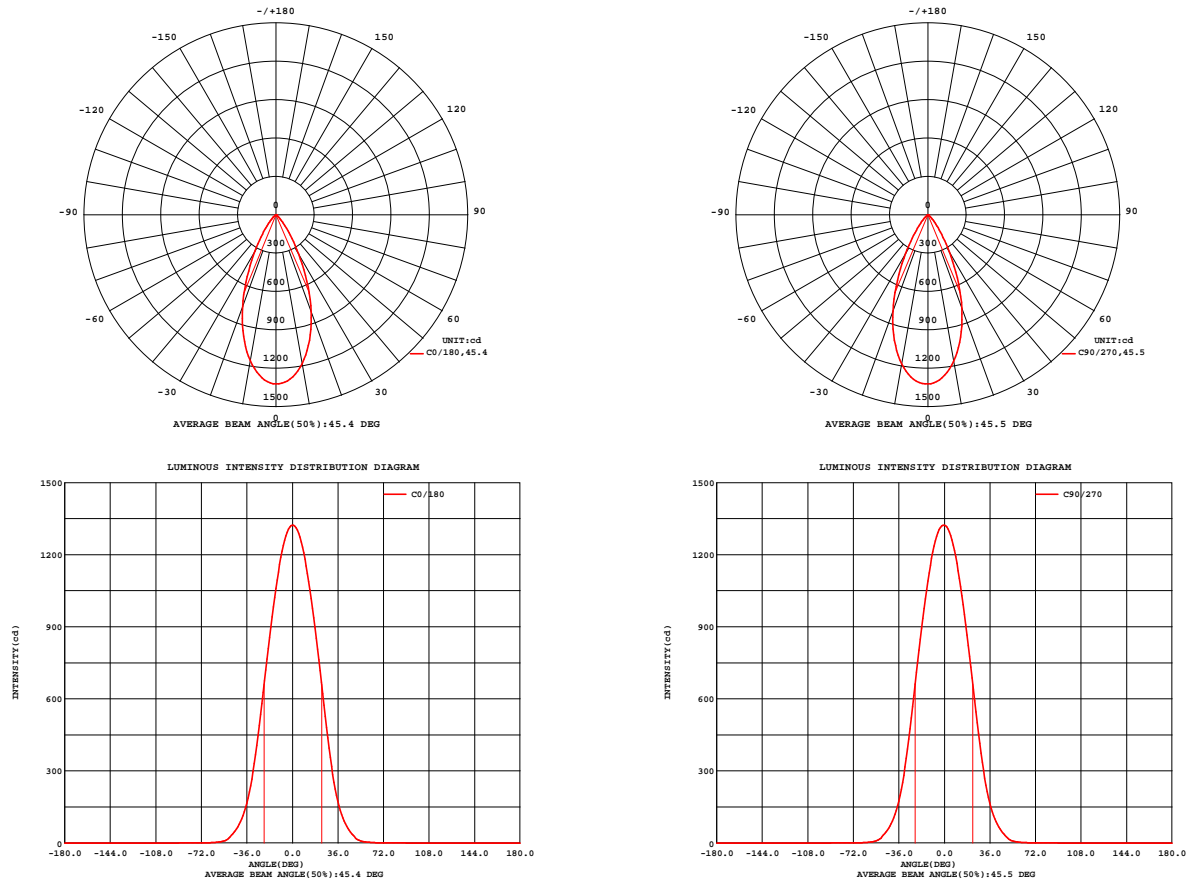


Fig. C0/C180

Fig. C90/C270

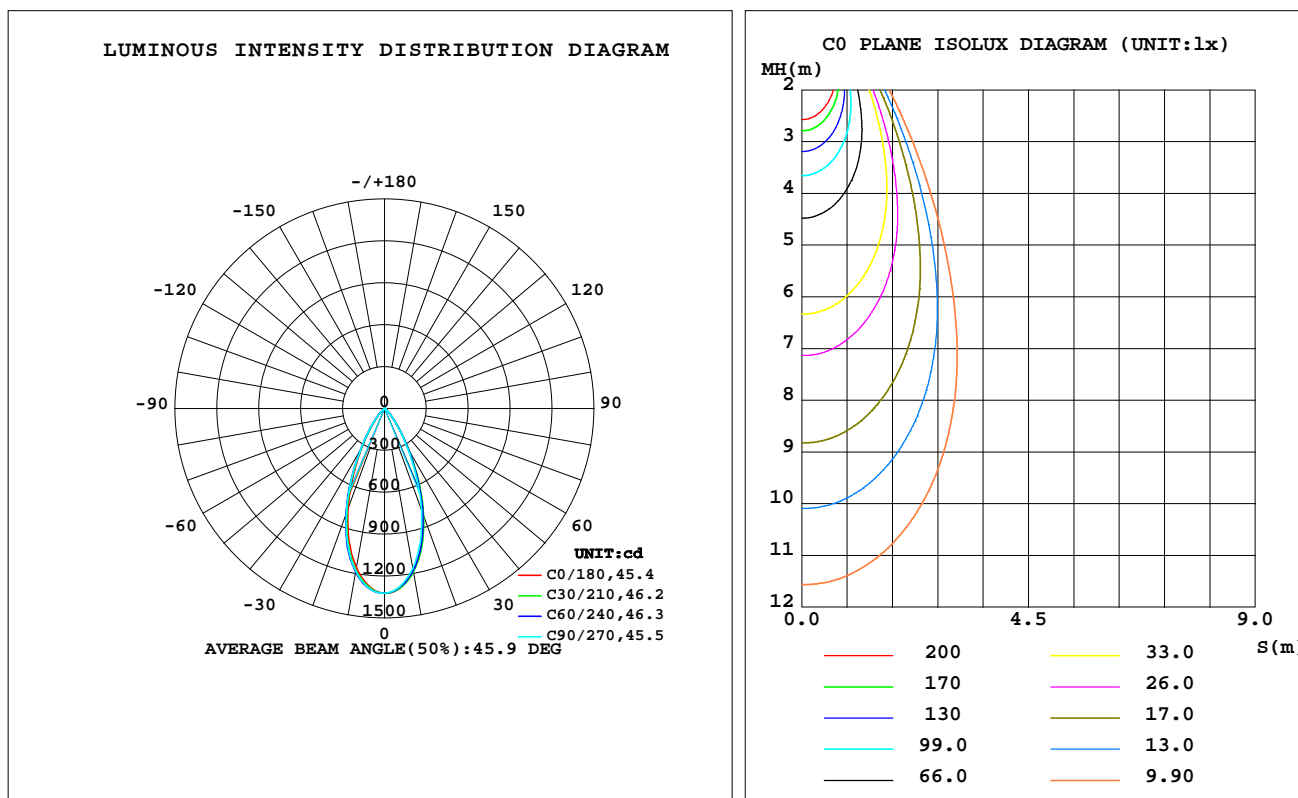
C Range: 0 - 360DEG
C Interval: 30.0DEG
Test Speed: HIGH
Temperature: 25.3 °C
Operators: zoe
Test Date: 2023-7-13

γ Range: 0 - 180DEG
γ Interval: 1.0DEG
Test System: EVERFINE GO-SPEX500_V1 SYSTEM V2.00.461
Humidity: 65.0%
Test Distance: 3.160m [K=1.0000]
Remarks: LAMP: BXR-V-DR-1830G-1000-K-23 Ra: 90
LENS: PM-1096C 50R
DRIVER: PUP20A-1WMC 450mA
30minutes warm-up

LUMINAIRE PHOTOMETRIC TEST REPORT

Test:U:120.19V I:0.1447A P:17.305W PF:0.9937 Freq:59.98Hz Lamp Flux:1493.63x1 lm		
NAME: 2118.193-LEA-15-DW	TYPE:	WEIGHT:
SPEC.: 3000K	DIM.:	SERIAL No.: 2307130898
MFR.: RISE	SUR.: 0.0063585m2	Shielding Angle:

DATA OF LAMP		PHOTOMETRIC DATA Eff: 47.62 lm/W			
MODEL	Bridgelux	I _{max} (cd)	1323	S/MH(C0/180)	0.71
NOMINAL POWER(W)	17	LOR(%)	55.2	S/MH(C90/270)	0.73
RATED VOLTAGE(V)	120	TOTAL FLUX(lm)	824.05	η UP,DN(C0-180)	0.0,27.5
NOMINAL FLUX(lm)	1493.63	CIE CLASS	DIRECT	η UP,DN(C180-360)	0.0,27.7
LAMPS INSIDE	1	η up(%)	0.0	CIBSE SHR NOM	0.75
TEST VOLTAGE(V)	120	η down(%)	55.2	CIBSE SHR MAX	0.75



C Range: 0 - 360DEG
C Interval: 30.0DEG
Test Speed: HIGH
Temperature:25.3℃
Operators:zoe
Test Date:2023-7-13

γ Range: 0 - 180DEG
γ Interval: 1.0DEG
Test System:EVERFINE GO-SPEX500_V1 SYSTEM V2.00.461
Humidity:65.0%
Test Distance:3.160m [K=1.0000]
Remarks: LAMP:BXRV-DR-1830G-1000-K-23 Ra:90
LENS: PM-1096C 50R
DRIVER: PUP20A-1WMC 450mA
30minutes warm-up

ZONAL FLUX DIAGRAM

ZONAL FLUX DIAGRAM:

γ	C0	C45	C90	C135	C180	C225	C270	C315	γ	Φ zone	Φ total	%lum,lamp
10	1182	1186	1163	1145	1159	1184	1184	1175	0- 10	119.0	119.0	14.4,7.97
20	807.3	814.8	777.4	751.5	765.7	801.2	802.4	792.7	10- 20	276.1	395.1	47.9,26.4
30	355.8	359.2	336.8	324.8	330.5	348.5	352.2	347.0	20- 30	252.7	647.8	78.6,43.4
40	104.2	104.6	100.7	99.53	100.5	102.8	104.2	102.6	30- 40	124.8	772.6	93.8,51.7
50	19.32	20.14	20.20	19.47	21.00	20.25	19.61	20.42	40- 50	41.90	814.5	98.8,54.5
60	3.182	3.227	3.044	2.988	2.949	2.971	3.008	2.969	50- 60	7.555	822.1	99.8,55
70	0.7138	0.7583	0.7723	0.8040	0.7918	0.7694	0.7275	0.6771	60- 70	1.518	823.6	99.9,55.1
80	0.1090	0.0940	0.0508	0.1259	0.2074	0.1003	0.0401	0.0761	70- 80	0.4058	824.0	100,55.2
90	0	0	0	0	0	0	0	0	80- 90	0.0250	824.0	100,55.2
100	0	0	0	0	0	0	0	0	90-100	0	824.0	100,55.2
110	0	0	0	0	0	0	0	0	100-110	0	824.0	100,55.2
120	0	0	0	0	0	0	0	0	110-120	0	824.0	100,55.2
130	0	0	0	0	0	0	0	0	120-130	0	824.0	100,55.2
140	0	0	0	0	0	0	0	0	130-140	0	824.0	100,55.2
150	0	0	0	0	0	0	0	0	140-150	0	824.0	100,55.2
160	0	0	0	0	0	0	0	0	150-160	0	824.0	100,55.2
170	0	0	0	0	0	0	0	0	160-170	0	824.0	100,55.2
180	0	0	0	0	0	0	0	0	170-180	0	824.0	100,55.2
DEG	LUMINOUS INTENSITY:cd									UNIT:lm		

C Range: 0 - 360DEG
C Interval: 30.0DEG
Test Speed: HIGH
Temperature:25.3℃
Operators:zoe
Test Date:2023-7-13

γ Range: 0 - 180DEG
 γ Interval: 1.0DEG
Test System:EVERFINE GO-SPEX500_V1 SYSTEM V2.00.461
Humidity:65.0%
Test Distance:3.160m [K=1.0000]
Remarks: LAMP:BXRV-DR-1830G-1000-K-23 Ra:90
LENS: PM-1096C 50R
DRIVER: PUP20A-1WMC 450mA
30minutes warm-up

LUMINANCE LIMITATION CURVES

Test:U:120.19V I:0.1447A P:17.305W PF:0.9937 Freq:59.98Hz
Lamp Flux:1493.63x1 lm

NAME: 2118.193-LEA-15-DW

TYPE:

WEIGHT:

SPEC.: 3000K

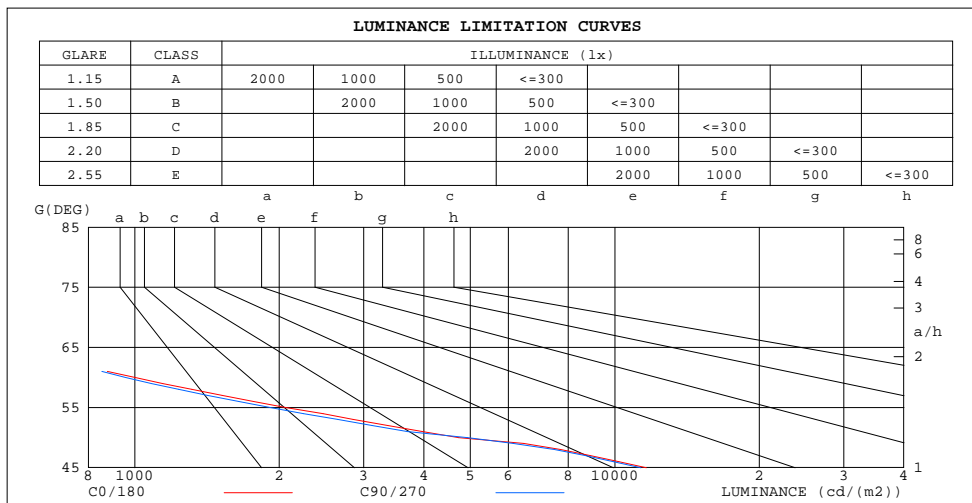
DIM.:

SERIAL No.: 2307130898

MFR.: RISE

SUR.: 0.0063585m2

Shielding Angle:



LUMINANCE cd/(m2)		
G(180)	C0/180	C90/270
85	34	23
80	99	46
75	221	184
70	329	355
65	510	539
60	1002	957
55	2066	1917
50	4733	4941
45	11630	11327

C Range: 0 - 360DEG
C Interval: 30.0DEG
Test Speed: HIGH
Temperature:25.3℃
Operators:zoe
Test Date:2023-7-13

γ Range: 0 - 180DEG
γ Interval: 1.0DEG
Test System:EVERFINE GO-SPEX500_V1 SYSTEM V2.00.461
Humidity:65.0%
Test Distance:3.160m [K=1.0000]
Remarks: LAMP:BXRV-DR-1830G-1000-K-23 Ra:90
LENS: PM-1096C 50R
DRIVER: PUP20A-1WMC 450mA
30minutes warm-up

CU AND LUMINAIRE BUDGETARY ESTIMATE DIAGRAM

Test:U:120.19V I:0.1447A P:17.305W PF:0.9937 Freq:59.98Hz
Lamp Flux:1493.63x1 lm

NAME: 2118.193-LEA-15-DW

TYPE:

WEIGHT:

SPEC.: 3000K

DIM.:

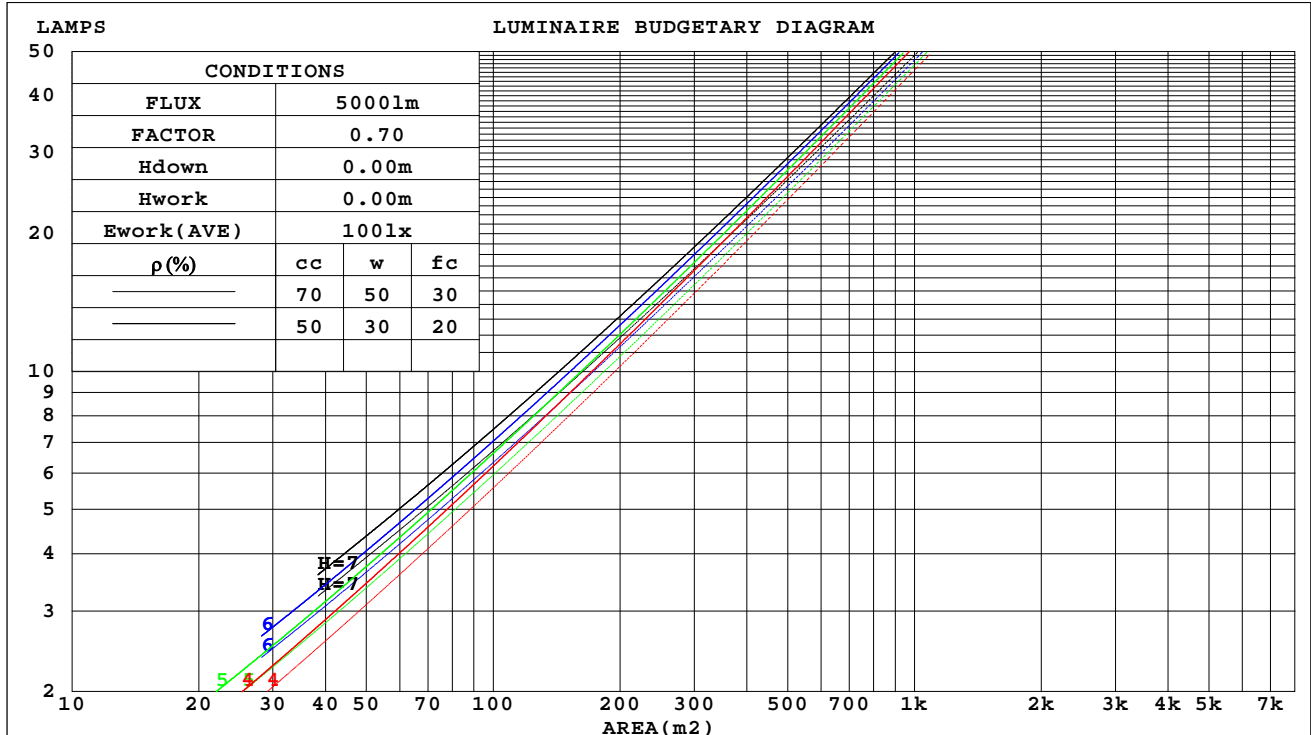
SERIAL No.: 2307130898

MFR.: RISE

SUR.: 0.0063585m2

Shielding Angle:

ρ_{cc}	80%			70%			50%			30%			10%			0
ρ_w	50%	30%	10%	50%	30%	10%	50%	30%	10%	50%	30%	10%	50%	30%	10%	0
ρ_{fc}	20%			20%			20%			20%			20%			0
RCR	RCR:Room Cavity Ratio			Coefficients of Utilization(CU)												
0.0	.66	.66	.66	.64	.64	.64	.61	.61	.61	.59	.59	.59	.56	.56	.56	.55
1.0	.61	.60	.59	.60	.59	.58	.58	.57	.56	.56	.55	.55	.54	.53	.53	.52
2.0	.57	.55	.54	.57	.55	.53	.55	.53	.52	.53	.52	.51	.52	.51	.50	.49
3.0	.54	.51	.49	.53	.51	.49	.52	.50	.48	.50	.49	.47	.49	.48	.47	.46
4.0	.51	.48	.46	.50	.47	.45	.49	.47	.45	.48	.46	.44	.47	.45	.44	.43
5.0	.48	.45	.43	.47	.45	.42	.46	.44	.42	.45	.43	.42	.45	.43	.41	.41
6.0	.45	.42	.40	.45	.42	.40	.44	.41	.40	.43	.41	.39	.42	.41	.39	.38
7.0	.43	.40	.38	.42	.40	.37	.42	.39	.37	.41	.39	.37	.40	.38	.37	.36
8.0	.41	.38	.35	.40	.37	.35	.40	.37	.35	.39	.37	.35	.39	.36	.35	.34
9.0	.39	.36	.34	.38	.35	.33	.38	.35	.33	.37	.35	.33	.37	.35	.33	.32
10.0	.37	.34	.32	.37	.34	.32	.36	.33	.32	.36	.33	.32	.35	.33	.31	.31



C Range: 0 - 360DEG
C Interval: 30.0DEG
Test Speed: HIGH
Temperature:25.3℃
Operators:zoe
Test Date:2023-7-13

γ Range: 0 - 180DEG
 γ Interval: 1.0DEG
Test System:EVERFINE GO-SPEX500_V1 SYSTEM V2.00.461
Humidity:65.0%
Test Distance:3.160m [K=1.0000]
Remarks: LAMP:BXRV-DR-1830G-1000-K-23 Ra:90
LENS: PM-1096C 50R
DRIVER: PUP20A-1WMC 450mA
30minutes warm-up

WEC AND CCEC

Test:U:120.19V I:0.1447A P:17.305W PF:0.9937 Freq:59.98Hz Lamp Flux:1493.63x1 lm		
NAME: 2118.193-LEA-15-DW	TYPE:	WEIGHT:
SPEC.: 3000K	DIM.:	SERIAL No.: 2307130898
MFR.: RISE	SUR.: 0.0063585m2	Shielding Angle:

pcc	80%			70%			50%			30%			10%			0	
pw	50%	30%	10%	50%	30%	10%	50%	30%	10%	50%	30%	10%	50%	30%	10%	0	
pfc	20%			20%			20%			20%			20%			0	
RCR	RCR:Room Cavity Ratio						Wall Exitance Coefficients(WEC)										
0.0																	
1.0	.093	.053	.017	.089	.051	.016	.082	.047	.015	.076	.044	.014	.070	.041	.013		
2.0	.088	.048	.015	.085	.047	.014	.080	.044	.014	.074	.042	.013	.069	.039	.012		
3.0	.084	.045	.013	.081	.044	.013	.077	.041	.013	.072	.039	.012	.068	.038	.012		
4.0	.080	.042	.012	.078	.041	.012	.073	.039	.012	.070	.037	.011	.066	.036	.011		
5.0	.076	.039	.011	.074	.038	.011	.071	.037	.011	.067	.035	.011	.064	.034	.010		
6.0	.073	.036	.010	.071	.036	.010	.068	.035	.010	.065	.034	.010	.062	.033	.010		
7.0	.070	.034	.010	.068	.034	.010	.065	.033	.009	.062	.032	.009	.060	.031	.009		
8.0	.067	.033	.009	.065	.032	.009	.063	.031	.009	.060	.031	.009	.058	.030	.009		
9.0	.064	.031	.009	.063	.031	.009	.060	.030	.008	.058	.029	.008	.056	.029	.008		
10.0	.061	.029	.008	.060	.029	.008	.058	.028	.008	.056	.028	.008	.054	.027	.008		

pcc	80%			70%			50%			30%			10%			0
pw	50%	30%	10%	50%	30%	10%	50%	30%	10%	50%	30%	10%	50%	30%	10%	0
pfc	20%			20%			20%			20%			20%			0
RCR	RCR:Room Cavity Ratio						Ceiling Cavity Exitance Coefficients(CCEC)									
0.0	.105	.105	.105	.090	.090	.090	.061	.061	.061	.035	.035	.035	.011	.011	.011	
1.0	.094	.087	.080	.080	.075	.069	.055	.051	.048	.032	.030	.028	.010	.010	.009	
2.0	.085	.073	.063	.073	.063	.054	.050	.044	.038	.029	.025	.022	.009	.008	.007	
3.0	.078	.063	.050	.067	.054	.043	.046	.038	.031	.027	.022	.018	.009	.007	.006	
4.0	.072	.054	.041	.062	.047	.035	.043	.033	.025	.025	.019	.015	.008	.006	.005	
5.0	.067	.048	.034	.058	.041	.029	.040	.029	.021	.023	.017	.012	.007	.006	.004	
6.0	.063	.043	.028	.054	.037	.024	.037	.026	.017	.022	.015	.010	.007	.005	.003	
7.0	.060	.039	.024	.051	.033	.021	.035	.023	.015	.021	.014	.009	.007	.005	.003	
8.0	.056	.035	.020	.049	.030	.018	.034	.021	.013	.020	.013	.008	.006	.004	.002	
9.0	.054	.032	.018	.046	.028	.015	.032	.020	.011	.019	.012	.007	.006	.004	.002	
10.0	.051	.030	.016	.044	.026	.014	.030	.018	.010	.018	.011	.006	.006	.004	.002	

C Range: 0 - 360DEG
C Interval: 30.0DEG
Test Speed: HIGH
Temperature:25.3℃
Operators:zoe
Test Date:2023-7-13

γ Range: 0 - 180DEG
γ Interval: 1.0DEG
Test System:EVERFINE GO-SPEX500_V1 SYSTEM V2.00.461
Humidity:65.0%
Test Distance:3.160m [K=1.0000]
Remarks: LAMP:BXRV-DR-1830G-1000-K-23 Ra:90
LENS: PM-1096C 50R
DRIVER: PUP20A-1WMC 450mA
30minutes warm-up

UGR(Unified Glare Rating) Table

Test:U:120.19V I:0.1447A P:17.305W PF:0.9937 Freq:59.98Hz Lamp Flux:1493.63x1 lm										
NAME: 2118.193-LEA-15-DW					TYPE:			WEIGHT:		
SPEC.: 3000K					DIM.:			SERIAL No.: 2307130898		
MFR.: RISE					SUR.: 0.0063585m2			Shielding Angle:		
ceiling/cavity	0.7	0.7	0.5	0.5	0.3	0.7	0.7	0.5	0.5	0.3
walls	0.5	0.3	0.5	0.3	0.3	0.5	0.3	0.5	0.3	0.3
working plane	0.2	0.2	0.2	0.2	0.2	0.2	0.2	0.2	0.2	0.2
Room dimensions	Viewed crosswise					Viewed endwise				
x = 2H y = 2H	14.4	15.2	14.6	15.4	15.6	14.1	15.0	14.3	15.1	15.3
3H	14.2	15.0	14.5	15.2	15.4	13.9	14.7	14.2	14.9	15.1
4H	14.1	14.9	14.4	15.1	15.3	13.8	14.6	14.1	14.8	15.0
6H	14.0	14.7	14.3	15.0	15.2	13.7	14.5	14.0	14.7	14.9
8H	14.0	14.7	14.3	14.9	15.2	13.7	14.4	14.0	14.6	14.9
12H	13.9	14.6	14.3	14.9	15.1	13.7	14.3	14.0	14.6	14.9
4H 2H	14.1	14.9	14.4	15.1	15.3	13.8	14.6	14.1	14.8	15.0
3H	13.9	14.6	14.3	14.9	15.2	13.7	14.3	14.0	14.6	14.9
4H	13.9	14.5	14.2	14.8	15.1	13.6	14.2	13.9	14.5	14.8
6H	13.8	14.3	14.1	14.6	15.0	13.5	14.0	13.8	14.3	14.7
8H	13.7	14.2	14.1	14.5	14.9	13.4	13.9	13.8	14.3	14.6
12H	13.7	14.1	14.1	14.5	14.9	13.4	13.8	13.8	14.2	14.6
8H 4H	13.7	14.2	14.1	14.5	14.9	13.4	13.9	13.8	14.3	14.6
6H	13.6	14.0	14.0	14.4	14.8	13.3	13.7	13.7	14.1	14.5
8H	13.5	13.9	14.0	14.3	14.8	13.3	13.6	13.7	14.0	14.5
12H	13.5	13.8	14.0	14.2	14.7	13.2	13.5	13.7	14.0	14.4
12H 4H	13.7	14.1	14.1	14.5	14.9	13.4	13.8	13.8	14.2	14.6
6H	13.5	13.9	14.0	14.3	14.8	13.3	13.6	13.7	14.0	14.5
8H	13.5	13.8	14.0	14.2	14.7	13.2	13.5	13.7	14.0	14.4
Variations with the observer position at spacings(CIE Pub.117):										
S = 1.0H	+ 3.0 / -12.6					+ 3.0 / -12.7				
1.5H	+ 4.9 / - 9.9					+ 4.8 / -10.0				
2.0H	+ 6.6 / -10.3					+ 6.6 / -11.0				

CIE Pub.117, 1494 lm Total Lamp Luminous Flux Correct (8log(F/F0) = 1.4)
Area: 0.0063585 m2

C Range: 0 - 360DEG
C Interval: 30.0DEG
Test Speed: HIGH
Temperature:25.3℃
Operators:zoe
Test Date:2023-7-13

γ Range: 0 - 180DEG
γ Interval: 1.0DEG
Test System:EVERFINE GO-SPEX500_V1 SYSTEM V2.00.461
Humidity:65.0%
Test Distance:3.160m [K=1.0000]
Remarks: LAMP:BXRV-DR-1830G-1000-K-23 Ra:90
LENS: PM-1096C 50R
DRIVER: PUP20A-1WMC 450mA
30minutes warm-up

UTILIZATION FACTORS TABLE

Test:U:120.19V I:0.1447A P:17.305W PF:0.9937 Freq:59.98Hz Lamp Flux:1493.63x1 lm		
NAME: 2118.193-LEA-15-DW	TYPE:	WEIGHT:
SPEC.: 3000K	DIM.:	SERIAL No.: 2307130898
MFR.: RISE	SUR.: 0.0063585m2	Shielding Angle:

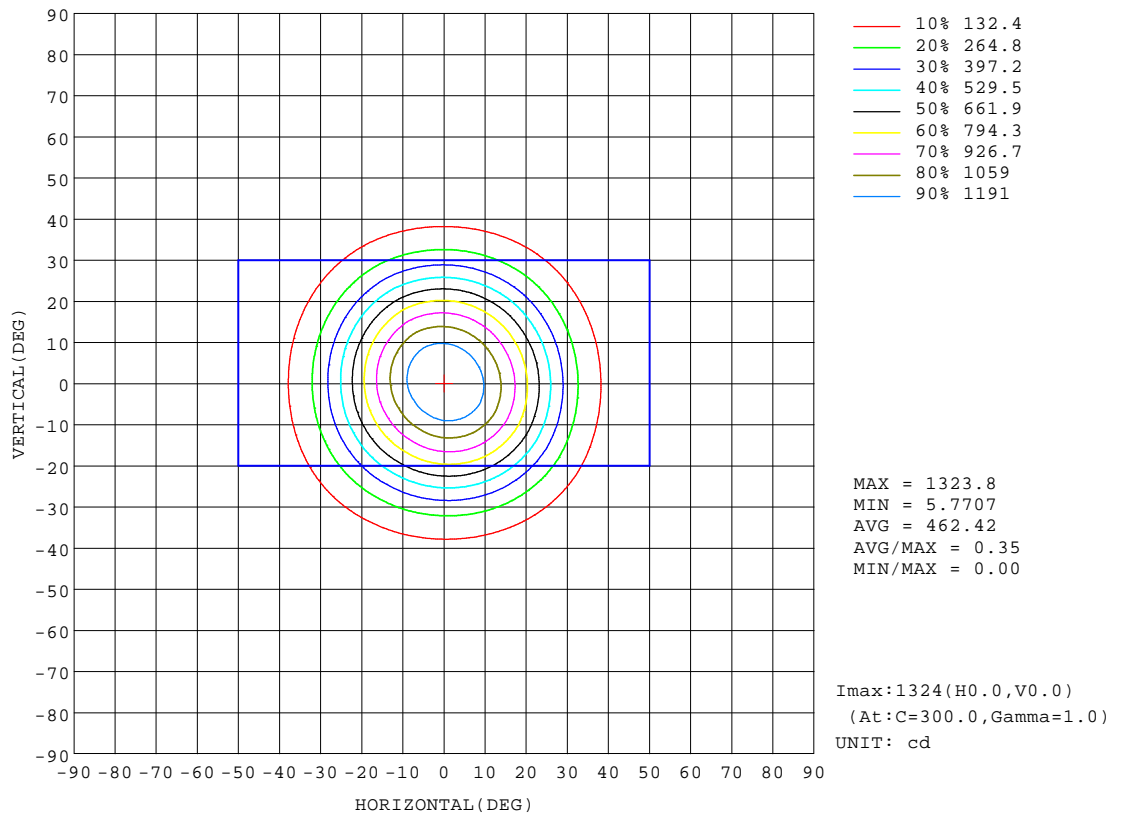
REFLECTANCE										
Ceiling	0.8	0.8	0.8	0.7	0.7	0.7	0.5	0.5	0.5	0
Walls	0.7	0.5	0.3	0.7	0.5	0.3	0.7	0.5	0.3	0
Working plane	0.2	0.2	0.2	0.2	0.2	0.2	0.2	0.2	0.2	0
ROOM INDEX	UTILIZATION FACTORS(PERCENT) $k(RI) \times RCR = 5$									
k = 0.60	48	45	43	48	45	43	48	45	43	41
0.80	52	49	47	52	49	47	51	49	47	45
1.00	55	52	50	54	52	50	54	52	49	47
1.25	57	54	52	57	54	52	55	53	52	50
1.50	59	56	54	58	56	54	57	55	53	51
2.00	60	58	56	59	57	56	58	56	55	52
2.50	61	59	57	60	58	57	58	57	56	53
3.00	62	60	58	61	59	58	59	58	57	53
4.00	63	61	60	62	60	59	60	59	58	54
5.00	64	62	61	62	61	60	60	59	59	55
ROOM INDEX	UF(total)									Direct
According to DIN EN 13032-2 2004			Suspended					SHRNOM = 1.25		

C Range: 0 - 360DEG
C Interval: 30.0DEG
Test Speed: HIGH
Temperature:25.3℃
Operators:zoe
Test Date:2023-7-13

γ Range: 0 - 180DEG
γ Interval: 1.0DEG
Test System:EVERFINE GO-SPEX500_V1 SYSTEM V2.00.461
Humidity:65.0%
Test Distance:3.160m [K=1.0000]
Remarks: LAMP:BXRV-DR-1830G-1000-K-23 Ra:90
LENS: PM-1096C 50R
DRIVER: PUP20A-1WMC 450mA
30minutes warm-up

ISOCANDELA DIAGRAM

Test:U:120.19V I:0.1447A P:17.305W PF:0.9937 Freq:59.98Hz Lamp Flux:1493.63x1 lm		
NAME: 2118.193-LEA-15-DW	TYPE:	WEIGHT:
SPEC.: 3000K	DIM.:	SERIAL No.: 2307130898
MFR.: RISE	SUR.: 0.0063585m2	Shielding Angle:

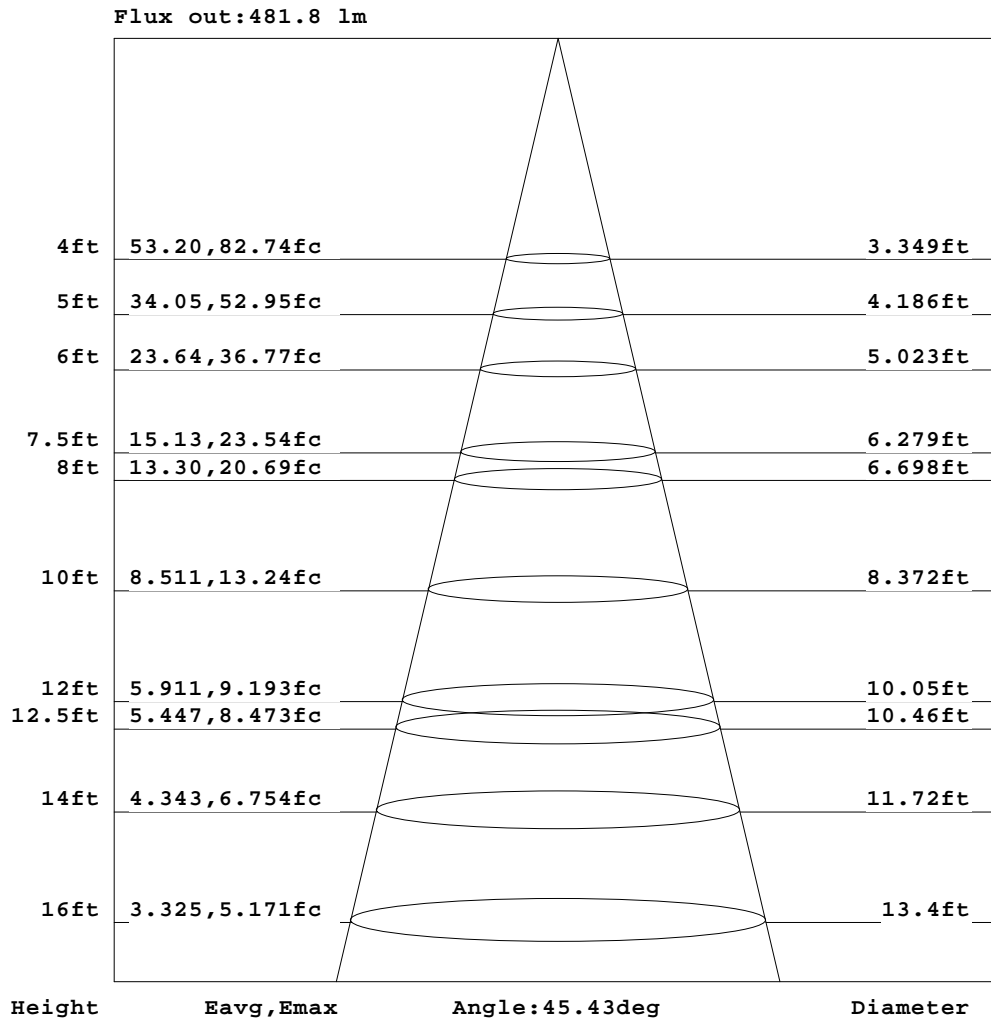


C Range: 0 - 360DEG
C Interval: 30.0DEG
Test Speed: HIGH
Temperature:25.3℃
Operators:zoe
Test Date:2023-7-13

γ Range: 0 - 180DEG
γ Interval: 1.0DEG
Test System:EVERFINE GO-SPEX500_V1 SYSTEM V2.00.461
Humidity:65.0%
Test Distance:3.160m [K=1.0000]
Remarks: LAMP:BXRV-DR-1830G-1000-K-23 Ra:90
LENS: PM-1096C 50R
DRIVER: PUP20A-1WMC 450mA
30minutes warm-up

AAI Figure

Test:U:120.19V I:0.1447A P:17.305W PF:0.9937 Freq:59.98Hz Lamp Flux:1493.63x1 lm		
NAME: 2118.193-LEA-15-DW	TYPE:	WEIGHT:
SPEC.: 3000K	DIM.:	SERIAL No.: 2307130898
MFR.: RISE	SUR.: 0.0063585m2	Shielding Angle:



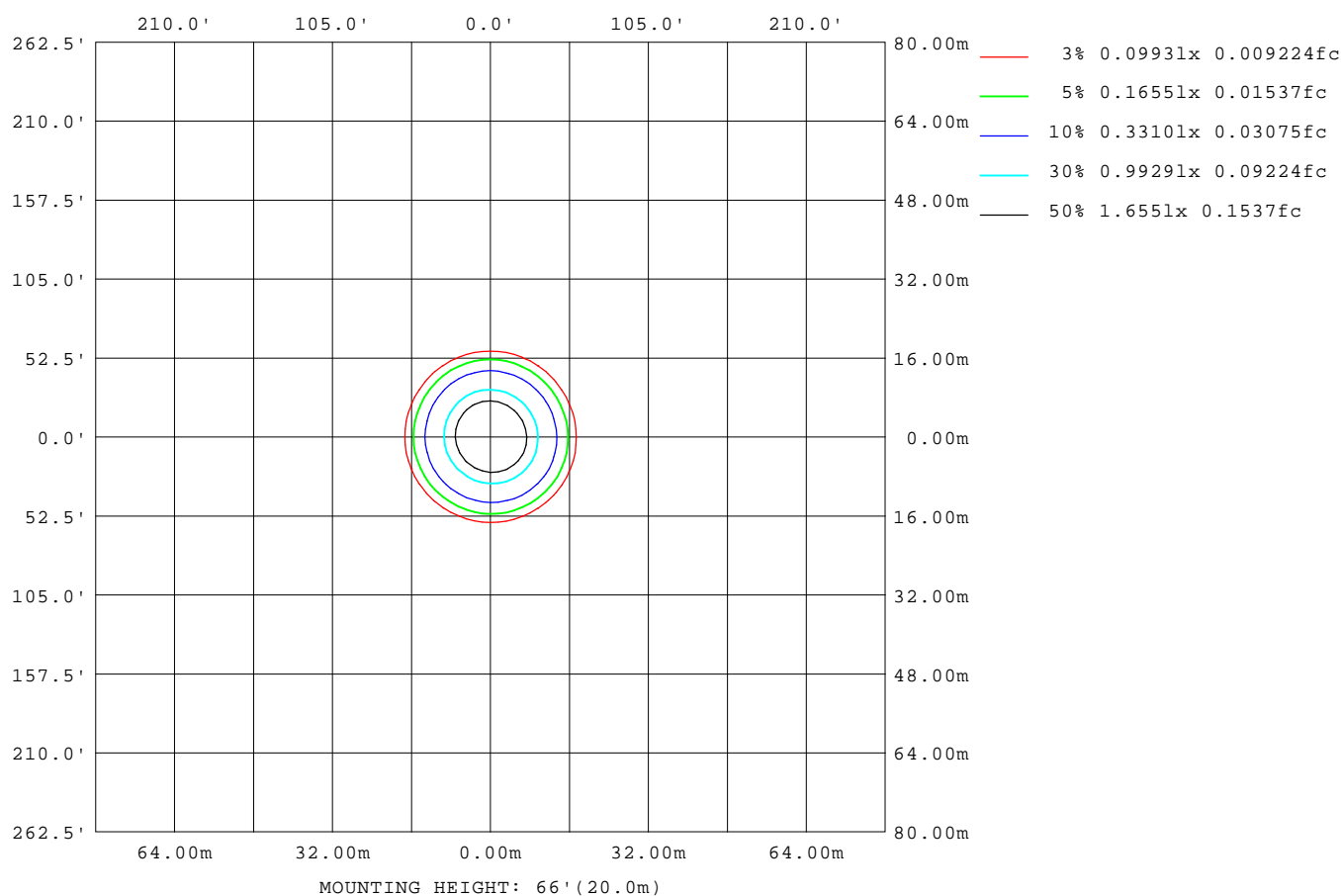
Note:The Curves indicate the illuminated area and the average illumination when the luminaire is at different distance.

C Range: 0 - 360DEG
C Interval: 30.0DEG
Test Speed: HIGH
Temperature:25.3℃
Operators:zoe
Test Date:2023-7-13

γ Range: 0 - 180DEG
γ Interval: 1.0DEG
Test System:EVERFINE GO-SPEX500_V1 SYSTEM V2.00.461
Humidity:65.0%
Test Distance:3.160m [K=1.0000]
Remarks: LAMP:BXRV-DR-1830G-1000-K-23 Ra:90
LENS: PM-1096C 50R
DRIVER: PUP20A-1WMC 450mA
30minutes warm-up

ISOLUX DIAGRAM

Test:U:120.19V I:0.1447A P:17.305W PF:0.9937 Freq:59.98Hz Lamp Flux:1493.63x1 lm		
NAME: 2118.193-LEA-15-DW	TYPE:	WEIGHT:
SPEC.: 3000K	DIM.:	SERIAL No.: 2307130898
MFR.: RISE	SUR.: 0.0063585m2	Shielding Angle:



C Range: 0 - 360DEG
C Interval: 30.0DEG
Test Speed: HIGH
Temperature:25.3°C
Operators:zoe
Test Date:2023-7-13

γ Range: 0 - 180DEG
γ Interval: 1.0DEG
Test System:EVERFINE GO-SPEX500_V1 SYSTEM V2.00.461
Humidity:65.0%
Test Distance:3.160m [K=1.0000]
Remarks: LAMP:BXRV-DR-1830G-1000-K-23 Ra:90
LENS: PM-1096C 50R
DRIVER: PUP20A-1WMC 450mA
30minutes warm-up

LED Avg.L Report

Test:U:120.19V I:0.1447A P:17.305W PF:0.9937 Freq:59.98Hz Lamp Flux:1493.63x1 lm		
NAME: 2118.193-LEA-15-DW	TYPE:	WEIGHT:
SPEC.: 3000K	DIM.:	SERIAL No.: 2307130898
MFR.: RISE	SUR.: 0.0063585m2	Shielding Angle:

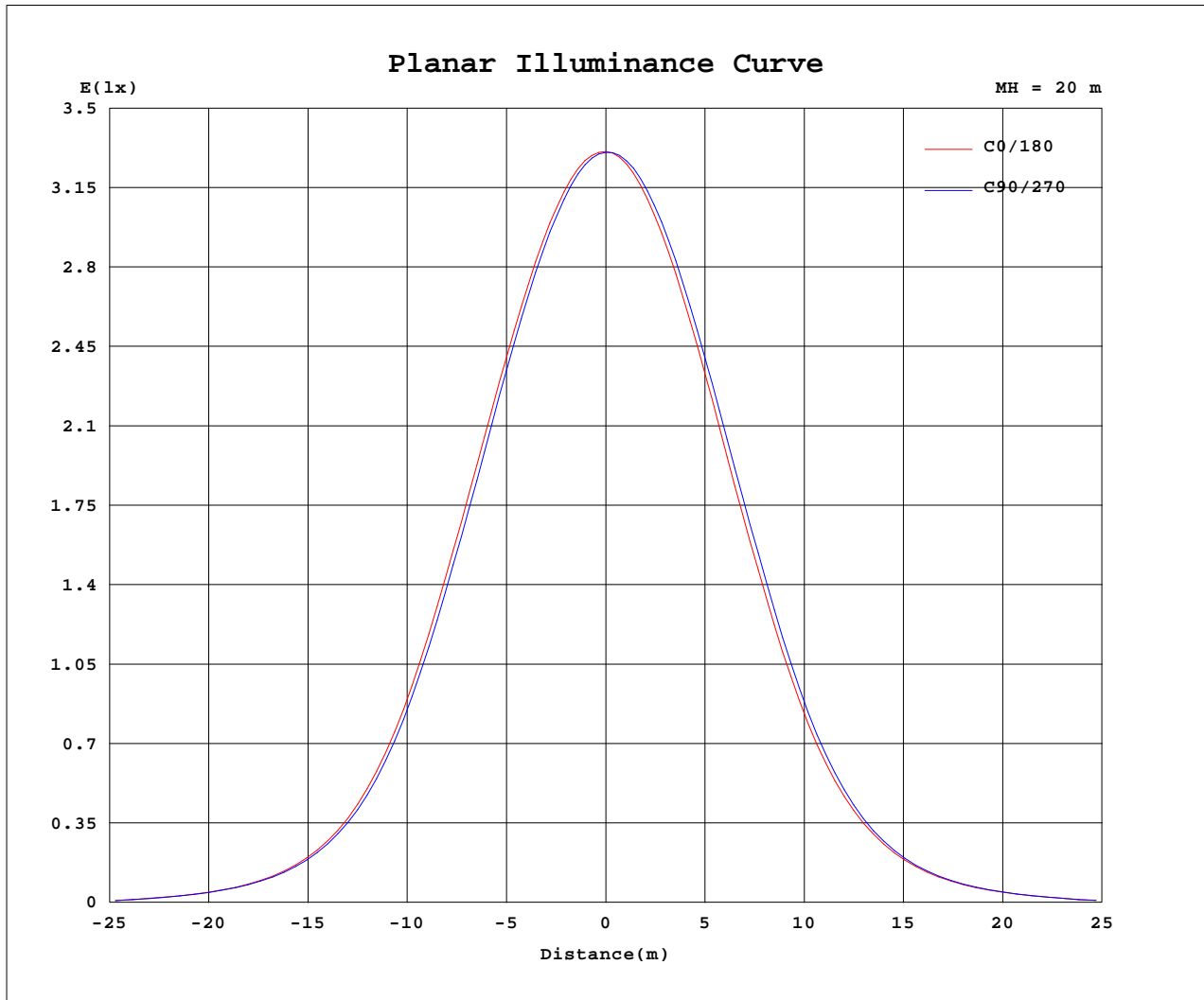
AvgL	cd/m2
L_0~180(65)av	501
L_0~180(75)av	250
L_0~180(85)av	32
L_90~270(65)av	513
L_90~270(75)av	176
L_90~270(85)av	23
L_45(65)av	496
L_45(75)av	226
L_45(85)av	12

Standard: GB/T 29293-2012

C Range: 0 - 360DEG
C Interval: 30.0DEG
Test Speed: HIGH
Temperature:25.3℃
Operators:zoe
Test Date:2023-7-13

γ Range: 0 - 180DEG
γ Interval: 1.0DEG
Test System:EVERFINE GO-SPEX500_V1 SYSTEM V2.00.461
Humidity:65.0%
Test Distance:3.160m [K=1.0000]
Remarks: LAMP:BXRV-DR-1830G-1000-K-23 Ra:90
LENS: PM-1096C 50R
DRIVER: PUP20A-1WMC 450mA
30minutes warm-up

Planar Illuminance Curve



C Range: 0 - 360DEG
 C Interval: 30.0DEG
 Test Speed: HIGH
 Temperature: 25.3 °C
 Operators: zoe
 Test Date: 2023-7-13

γ Range: 0 - 180DEG
 γ Interval: 1.0DEG
 Test System: EVERFINE GO-SPEX500_V1 SYSTEM V2.00.461
 Humidity: 65.0%
 Test Distance: 3.160m [K=1.0000]
 Remarks: LAMP: BXRV-DR-1830G-1000-K-23 Ra: 90
 LENS: PM-1096C 50R
 DRIVER: PUP20A-1WMC 450mA
 30minutes warm-up

LUMINOUS DISTRIBUTION INTENSITY DATA

Test:U:120.19V I:0.1447A P:17.305W PF:0.9937 Freq:59.98Hz Lamp Flux:1493.63x1 lm		
NAME: 2118.193-LEA-15-DW	TYPE:	WEIGHT:
SPEC.: 3000K	DIM.:	SERIAL No.: 2307130898
MFR.: RISE	SUR.: 0.0063585m2	Shielding Angle:

Table--1

UNIT: cd

C(DEG) γ (DEG)	0	30	60	90	120	150	180	210	240	270	300	330						
0	1322	1322	1322	1322	1322	1322	1322	1322	1322	1322	1322	1322						
5	1289	1290	1285	1279	1272	1271	1278	1284	1292	1291	1289	1288						
10	1182	1190	1181	1163	1146	1145	1159	1177	1191	1184	1176	1174						
15	1017	1031	1017	991	966	965	983	1007	1027	1016	1005	1003						
20	807	823	806	777	752	751	766	790	812	802	793	793						
25	574	587	571	546	524	525	534	553	573	567	560	559						
30	356	365	354	337	324	326	330	341	356	352	348	346						
35	198	205	196	189	183	186	187	191	200	197	197	193						
40	104	106	103	101	98.4	101	101	101	104	104	103	102						
45	52.2	53.0	51.2	50.9	50.6	51.8	51.7	51.4	52.3	53.0	52.4	51.4						
50	19.3	21.8	18.5	20.2	18.1	20.8	21.0	18.9	21.6	19.6	21.7	19.1						
55	7.53	7.64	7.19	6.99	6.96	7.12	7.11	7.23	7.47	7.46	7.46	7.38						
60	3.18	3.27	3.18	3.04	2.96	3.01	2.95	2.93	3.01	3.01	2.94	3.00						
65	1.37	1.43	1.36	1.45	1.33	1.35	1.32	1.31	1.33	1.31	1.26	1.31						
70	0.71	0.75	0.77	0.77	0.80	0.81	0.79	0.77	0.76	0.73	0.68	0.67						
75	0.36	0.39	0.33	0.30	0.38	0.47	0.46	0.44	0.33	0.28	0.28	0.33						
80	0.11	0.13	0.06	0.05	0.07	0.18	0.21	0.15	0.05	0.04	0.05	0.10						
85	0.02	0.01	0.01	0.01	0.01	0.01	0.02	0.01	0.01	0.01	0.00	0.00						
90	0.00	0.00	0.00	0.00	0.00	0.00	0.00	0.00	0.00	0.00	0.00	0.00						
95	0.00	0.00	0.00	0.00	0.00	0.00	0.00	0.00	0.00	0.00	0.00	0.00						
100	0.00	0.00	0.00	0.00	0.00	0.00	0.00	0.00	0.00	0.00	0.00	0.00						
105	0.00	0.00	0.00	0.00	0.00	0.00	0.00	0.00	0.00	0.00	0.00	0.00						
110	0.00	0.00	0.00	0.00	0.00	0.00	0.00	0.00	0.00	0.00	0.00	0.00						
115	0.00	0.00	0.00	0.00	0.00	0.00	0.00	0.00	0.00	0.00	0.00	0.00						
120	0.00	0.00	0.00	0.00	0.00	0.00	0.00	0.00	0.00	0.00	0.00	0.00						
125	0.00	0.00	0.00	0.00	0.00	0.00	0.00	0.00	0.00	0.00	0.00	0.00						
130	0.00	0.00	0.00	0.00	0.00	0.00	0.00	0.00	0.00	0.00	0.00	0.00						
135	0.00	0.00	0.00	0.00	0.00	0.00	0.00	0.00	0.00	0.00	0.00	0.00						
140	0.00	0.00	0.00	0.00	0.00	0.00	0.00	0.00	0.00	0.00	0.00	0.00						
145	0.00	0.00	0.00	0.00	0.00	0.00	0.00	0.00	0.00	0.00	0.00	0.00						
150	0.00	0.00	0.00	0.00	0.00	0.00	0.00	0.00	0.00	0.00	0.00	0.00						
155	0.00	0.00	0.00	0.00	0.00	0.00	0.00	0.00	0.00	0.00	0.00	0.00						
160	0.00	0.00	0.00	0.00	0.00	0.00	0.00	0.00	0.00	0.00	0.00	0.00						
165	0.00	0.00	0.00	0.00	0.00	0.00	0.00	0.00	0.00	0.00	0.00	0.00						
170	0.00	0.00	0.00	0.00	0.00	0.00	0.00	0.00	0.00	0.00	0.00	0.00						
175	0.00	0.00	0.00	0.00	0.00	0.00	0.00	0.00	0.00	0.00	0.00	0.00						
180	0.00	0.00	0.00	0.00	0.00	0.00	0.00	0.00	0.00	0.00	0.00	0.00						

C Range: 0 - 360DEG
C Interval: 30.0DEG
Test Speed: HIGH
Temperature:25.3℃
Operators:zoe
Test Date:2023-7-13

γ Range: 0 - 180DEG
γ Interval: 1.0DEG
Test System:EVERFINE GO-SPEX500_V1 SYSTEM V2.00.461
Humidity:65.0%
Test Distance:3.160m [K=1.0000]
Remarks: LAMP:BXRV-DR-1830G-1000-K-23 Ra:90
LENS: PM-1096C 50R
DRIVER: PUP20A-1WMC 450mA
30minutes warm-up